

## WELCOME

Welcome to the Summer issue of the Florida-California Cancer Research Education & Engagement (CaRE<sup>2</sup>) Health Equity Center Newsletter! The CaRE<sup>2</sup> Health Equity Center partnership between Florida A&M University, University of Florida, and University of Southern California is concluding the first year of our U54 grant sponsored by the National Cancer Institute. Continue reading to learn about our progress thus far.

## CARE<sup>2</sup> TRAINEES

On May 6<sup>th</sup>, 2019, the Florida-California CaRE<sup>2</sup> Health Equity Center kicked off its Summer Program with 35 trainees.

*To the right, FAMU trainees are pictured with first lady Sharon Robinson at the Men's Health Fair.*

READ ON PAGE 2



## THANK YOU SPONSORS!

The CaRE<sup>2</sup> triad welcomed NCI Program Officers and Program Steering Committee to the campus of Florida Agricultural and Mechanical University on April 5<sup>th</sup>, 2019.

*To the left, PSC and NIH members are pictured after April's 5<sup>th</sup>'s PSC Meeting*

READ ON PAGE 5

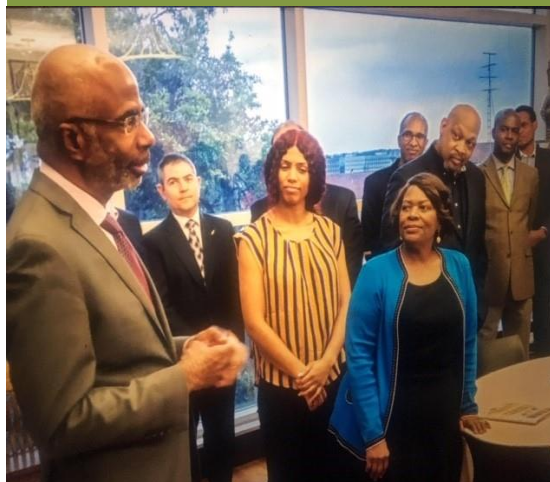


## SPOTLIGHTS

Congratulations to our CaRE<sup>2</sup> leaders, trainees, and members for outstanding achievements and success. Hardwork certainly does pay off!

*To the right, Dr. Robinson, FAMU President, gives encouraging words to CaRE<sup>2</sup> members at the Black Archives luncheon.*

READ ON PAGE 6



## GET AN EXCLUSIVE LOOK INSIDE

- Page 8: Citizen Scientist Pilot Program
- Page 9: Save the Dates
- Page 9: Minority Cancer Trivia
- Page 10: Gallery
- Page 12: Contact Us



### **We CaRE 2!**

CaRE<sup>2</sup>'s Research Education Core collaboratively launched summer 2019 Research Programs at FAMU, UF, and USC for undergraduate, post-bac, and graduate trainee. Thirteen undergraduate students are currently being exposed to cancer health disparities research: five undergrads have been assigned to UF and eight are assigned to FAMU. One postbac trainee started on January 2019 at UF, two postbac trainees will start on August 5, 2019 at UF, and two postbac trainees will start at USC on August 5, 2019. Trainees were matched to research laboratories to combine information and approaches from across several disciplines. Since the initiation of this program in May on 2019, trainees have been given the opportunity to learn various hands on research techniques in the labs, but have also acquired research education through a vast array of seminars and webinars on topics such as bioinformatics and career development. In addition to, trainees are learning the importance of dissemination of research results and community engagement.



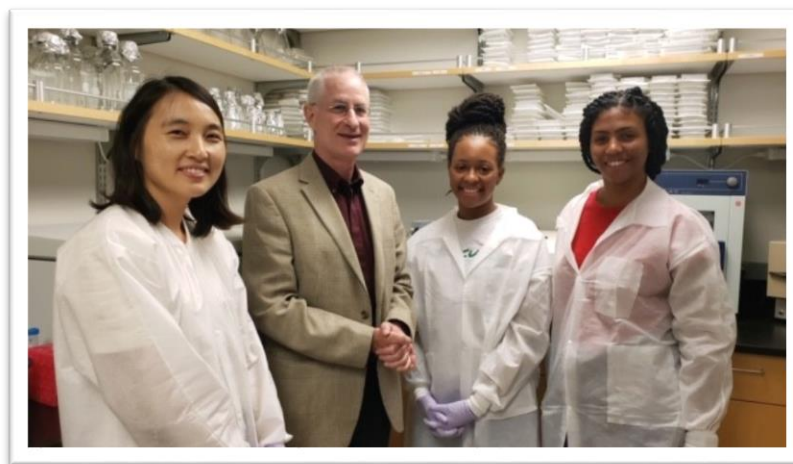
*Trainees are pictured above in FAMU's labs.*



# CaRE<sup>2</sup> Trainees

**FAMU MPI/Mentor Dr. Renee Reams and mentees Taliah Qaiyim and Stephanie Rivera-Correra travel to USC for research for a mini research sabbatical!**

Dr. Renee Reams (Project 1 Co-Investigator and MPI) spent three weeks at the USC CaRE<sup>2</sup> Center in the laboratory of her Project 1 collaborator, Dr. Pinchas Cohen, Dean of School of Gerontology. Two FAMU Students, Stephanie Rivera-Correa and Taliah Qaiyim, traveled with Dr. Reams and participated in hands-on research that supports specific aims of Project 1, namely RNA sequencing of prostate tumors and learning R- programming and bioinformatics packages to support the analysis of RNA seq data. During the three weeks at USC, Dr. Reams and FAMU student trainees worked in Dr. Carpten's Translational Genomics Center to isolate and vigorously validate purity of RNA from FFPE sample. Dr. Reams and students visited Dr. Wendy Cozen and Jose Aparicio in the USC Tissue repository. Also during this visit, Dr. Reams and students visited Dr. Bo Han's laboratory and discussed her spheroid cell cultures. Dr. Han is an investigator on the CaRE<sup>2</sup> Research Project 2. Dr. Lourdes paid a visit to Dr. Reams and her students at the School of Gerontology during the second week of this mini research sabbatical. Dr. Reams and students earned three USC Biosafety Training certificates (general laboratory safety, Bloodborne pathogens, as well as IBC and IRB training). At Dr. Cohen's USC laboratory they learned in-house ELISA assay to detect mitochondrial peptide and mitochondrial DNA copy number assay from Dr. Pinchas Cohen's research group. In Dr. John Carpten's Translational Genomics Center, Dr. Reams and students obtained isolated total RNA from FFPE tissues derived from Prostate tumors in black men for their initial RNA seq experiment.



*Trainees Taliah and Stephanie are pictured in Dr. Cohen's lab at USC with Dr. Cohen and research investigator Dr. Kim.*

# CaRE<sup>2</sup> Trainees

## USC welcomes their trainees with a social!

On May 3rd at 4 pm, the USC CaRE<sup>2</sup> branch held its first social event to introduce CaRE<sup>2</sup> trainees to leadership members, get acquainted with each other, and learn about training opportunities. USC CaRE<sup>2</sup> leaders Dr. John Carpten and Dr. Mariana Stern attended as well as Dr. Ite Offringa (who organized the event), Dr. Lourdes Baezconde, Dr. Bo Han, and Dr. Hassy Pinchas Cohen. Postdoctoral trainees Dr. Sabrina Smiley, Dr. Anthony Carlos and Dr. Tatiana Basanez mingled with PhD students Carol Ochoa, Cynthia Begay and Daniel Fernandez. Post-baccalaureate trainee Chante' Butler attended the social, and USC's second post-baccalaureate trainee Samantha Joseph took a break from FAMU commencement events to join the event by video conference. Both young women will begin their year-long training this summer. Prospective CaRE<sup>2</sup> members Dr. Troy McEachron, an early stage investigator, and PhD student D.J. Fernandez came to get more information. Also present was community member and prostate cancer survivor Freddie Muse. PhD student mentors Dr. Claradina Soto and Dr. Martin Kast attended as well. A number of trainees brought posters to share their work. CaRE<sup>2</sup>'s Anne Taguchi and Joyce Perez from the graduate affairs office helped organize the event, ensuring plenty of snacks and drinks for all!



*Trainees and mentors look on as Dr. Ite Offringa, USC leader of the Research and Education Core (REC), presents a few introductory slides about CaRE<sup>2</sup> and the training and education experiences offered. Dr. Offringa shares REC leadership with Dr. Debra Lyon from the University of Florida and Drs. Bereket Mochona and Kinfe Redda from Florida A&M University.*

“  
Although cancer incidence and mortality overall are declining in all racial/ethnic groups in the United States, certain groups continue to be at increased risk of developing or dying from particular cancers.  
”

-National Cancer Institute



Pictured: Dr. Redda (FAMU PI), Dr. Odedina (UF PI), Dr. Carpten (USC PI), Dr. Stern (USC PI), Dr. Ojeifo (NIH), Dr. Bailey (NIH), Dr. Soyombo and Christina Lavender (FAMU Coordinator) after April 4<sup>th</sup>'s Harmonization Meeting.

# NCI and PSC Visit

Together, we make a difference.

## April 4<sup>th</sup> Harmonization Meeting

CaRE<sup>2</sup> Health Equity Center MPIs (Drs. Reams, Redda, Odedina, Wilkie, Carpten, and Stern) organized the Center's first Harmonization and Program Steering Committee Meeting collectively on April 4<sup>th</sup> between NCI Program Directors, Institutional Leaders, University Presidents, Vice Presidents, Vice President's for Research, and Cancer Center Directors from each CaRE<sup>2</sup> Center. Members of CaRE<sup>2</sup> center and the and PSC members convened for separate pre-PSC meeting conferences and dinner in the Black Archives Museum on the campus of Florida A&M University.

## April 5<sup>th</sup> Program Steering Committee Meeting

The Center's then held its First Annual Program Steering Committee (PSC) Meeting, which brought together all three CaRE<sup>2</sup> researchers, Core Leaders, student trainees, and CaRE<sup>2</sup> MPIs, was held at Florida A&M University on April 5, 2019. The meeting ended with an oral debriefing by PSC Chair/PSC members to the Administration Core to discuss opportunities for improvement and strengths to increase the effectiveness of the overall CaRE<sup>2</sup> center. The CaRE<sup>2</sup> Center would like to send out a special thank you to everyone who made this meeting a success!



# SPOTLIGHTS

## CaRE<sup>2</sup> Honors, Awards, and Submissions

- **Dr. John Carpten, PhD.** chairs AACR Annual Meeting 2019.
  - Visit: <https://blog.aacr.org/meet-john-d-carpten-phd-program-chair-of-the-aacr-annual-meeting-2019/>
- **Dr. John Carpten, Folake Odedina, and Baez Conde Lourdes** presents at the AACRE Annual Meeting 2019.
- **Dr. Marianna Stern** serves as the session chair for AACR Annual Meeting 2019.
- **Dr. Folake Odedina** launches CaRE<sup>2</sup> Research You-Tube Channel at AACR 2019.
- **Dr. Kinf Redda, Marianna Stern, and Bodour Sahlia** featured in Inaugural CaRE<sup>2</sup> Research Link You-Tub Channel.

## CaRE<sup>2</sup> Supplement Submissions

Competitive Revisions/Administrative and Diversity Supplements submitted by CaRE<sup>2</sup>.

**Revision/Supplement #:** 5R01CA201352-02S1

**PI:** Wilkie

**Revision/Supplement Title:** Preclinical development of MEK/MTOR blockade in breast cancer metastasis

**Revision/Supplement #:** AN:4285806

**PIs:** Schmittgen, Fredenburg, and Odedina

**Revision/Supplement Title:** Investigation of population based genetic variation in microRNAs in relation to head and neck cancer risk and racially disparate outcomes.

**Revision/Supplement #:** NOT-AG-18-039

**PIs:** Cohen, Carpten, Reams, and Rivera-Correa

**Revision/Supplement Title:** The role of the Mito-Transcriptome in the Pathogenesis of Alzheimer's Disease and its relation to Prostate Cancer and Androgen Blockade

**Revision/Supplement #:** AN: 4287779

**PIs:** Reams, Carpten, and Rivera-Correa

**Revision/Supplement Title:** Secondary Data Analysis of Novel Prostate Transcriptome RNA Seq datasets for Mitotranscriptome gene expression evaluation.

# SPOTLIGHTS

## Congratulations Dr. Lisa Scarton!

U54 ESI, Lisa Scarton, Ph.D., RN, was selected as one of the 2019 Health Disparities Research Institute Scholars. Lisa's mentor is Dr. Diana Wilkie, Director of the Center for Palliative Care Research and Education (CPCRE). Dr. Scarton has extensive history in diabetes research and has a passion for working with Native American Communities. The Health Disparities Research Institute Scholars is a competitive NIH program, one that will aid Dr. Scarton's passion for creating interventions for those communities affected by diabetes. According to the NIMHD Health Disparities Institute, "The goal of the Health Disparities Research Institute is to provide participants with a broad overview of the leading issues facing minority health and health disparities research and stimulate discussion of proposed research projects. Institute participants are expected to attend all activities. Activities will include lectures, seminars, interactive sessions, and small group discussions with leading scientists and NIH staff."



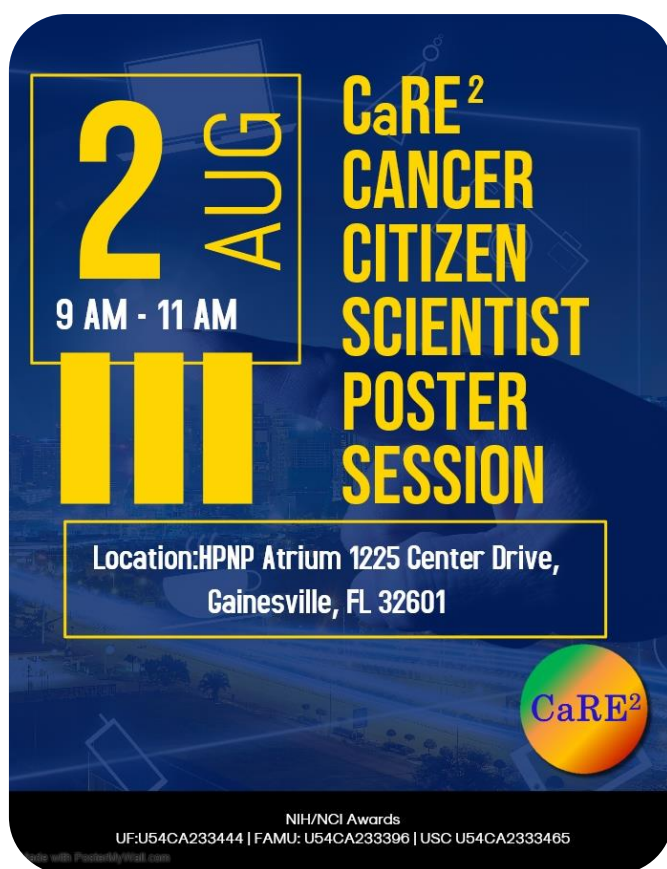
Congratulations Lisa for this outstanding opportunity!



# Citizen Scientist Pilot Program

## CaRE<sup>2</sup> Cancer Citizen Scientist Pilot Program

The CaRE<sup>2</sup> Center at the University of Florida is currently piloting a Cancer Citizen Scientist Leadership Training program. The program seeks to develop the manpower for research advocates who can work closely with cancer scientists to address cancer health disparities. The three participants in the program have completed a two-week self-learning intensive, which includes written materials and online lectures from experts on a variety of topics relevant to cancer disparities research. They will see what they have learned in action when they engage in a 2-day experiential training at University of Florida while touring the labs of our CaRE<sup>2</sup> Scientists. They will apply all of this knowledge working with the studies through the summer and will present a poster session of their work at University of Florida on August 2nd.





# Save the Date!

Look out for opportunities to learn more about CaRE2

1. **July 29<sup>th</sup>** | CaRE<sup>2</sup> REC Seminar  
Dr. Debra Lyon, RN, PhD, FNP-BC, FAAN  
*Intergrating the Multiple Aspects of Cancer Health Disparities to promote Health in Blacks and Hispanics*  
1:30 pm to 2:30 pm at UF's College of Nursing Conference Room
2. **July 30<sup>th</sup>** | CaRE<sup>2</sup> Monthly Webinar  
*The Bench with Bedside Initiative: A model for engaging patients in translational Research*  
Dr. Bodour Salhia  
2:00 PM to 3:00 PM EDT | Log on at: <https://uflphi.zoom.us/j/464695891>
3. **July 30<sup>th</sup>** | FAMU CaRE<sup>2</sup> Summer Trainee Program Closing Presentations  
11:30 AM to 4:00 PM at FAMU College of Pharmacy
4. **August 2<sup>nd</sup>** | CaRE<sup>2</sup> Cancer Scientist Poster Session  
10:00 AM to 12:00 PM at UF HPNP Atrium
5. **August 10<sup>th</sup>** | CaRE<sup>2</sup> Community Outreach Main Event: Community Advocate Prostate Cancer Training  
11:30 am to 3:00 pm | Video Conferencing details TBA
6. **September 20<sup>th</sup>-23<sup>rd</sup>** | Science of Cancer Health Disparity in Racial & Ethnic Minorities and the Medically Underserved Conference  
San Francisco, CA | Visit: [aacr.org/Meetings/Pages/MeetingDetail.aspx?EventItemID=183](http://aacr.org/Meetings/Pages/MeetingDetail.aspx?EventItemID=183)
7. **November 17<sup>th</sup> – 21<sup>st</sup>** | 2020 Science of Global Prostate Cancer  
Barcelona, Spain | Visit: [Globalprostatecancerconference.com](http://Globalprostatecancerconference.com)
8. **April 24<sup>th</sup> – 29<sup>th</sup>** | 2020 Annual AACR meeting  
San Diego, CA | Visit: [aacr.org/Meetings/Pages/Default.aspx](http://aacr.org/Meetings/Pages/Default.aspx)

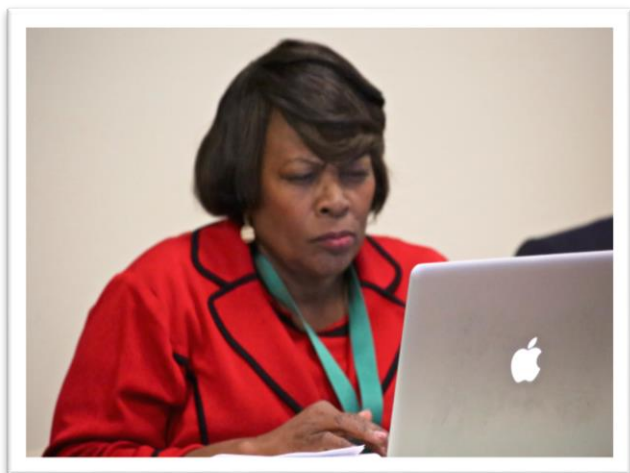
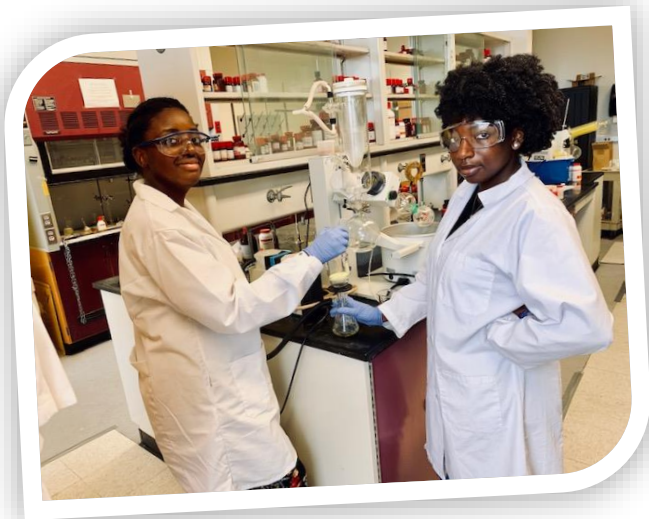
## Minority Cancer Trivia

Are you aware of cancer disparities?

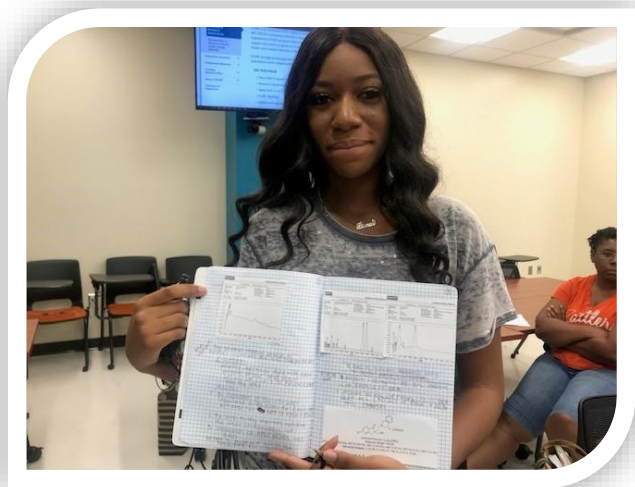
1. African American women are much more likely than white women to die of **breast cancer**. The mortality gap is widening as the incidence rate in African American women, which in the past had been \_\_\_\_\_ than that in white women, has caught up to that in white women.
2. African Americans are more than \_\_\_\_\_ as likely as whites to die of **prostate cancer** and nearly twice as likely to die of **stomach cancer**.
3. Hispanic and American Indian/Alaska Native women have higher rates of **cervical cancer** than women of other racial/ethnic groups; African American women have the \_\_\_\_\_ rates of death from the disease.
4. African American women are nearly twice as likely as white women to be diagnosed with **triple-negative breast cancer**, which is more \_\_\_\_\_ and \_\_\_\_\_ to treat than other subtypes of breast cancer.
5. There are large differences among racial/ethnic groups in **colorectal cancer screening** rates, with Spanish-speaking Hispanics \_\_\_\_\_ likely to be screened than whites or English-speaking Hispanics.

1. Lower; 2. Twice; 3. Highest; 4. Aggressive/Harder; 5. Less

# CaRE<sup>2</sup> Gallery









# Stay Connected

Visit our websites at <http://care2usc.org> and <https://care2.cancer.ufl.edu>, follow us on social media @care2usc and @care2fam, and for the most up to date info, become a member to receive updates directly to your inbox at <http://bit.ly/2zQN3kS>

## Contact Us!



Christina Lavender, BS  
FAMU Center Coordinator  
[christina.lavnder@fam.u.edu](mailto:christina.lavnder@fam.u.edu)



Anne Taguchi  
USC Center Coordinator  
[ataguchi@usc.edu](mailto:ataguchi@usc.edu)



Nissa Askins, MPH  
Center Coordinator  
[nissa.askins@cop.ufl.edu](mailto:nissa.askins@cop.ufl.edu)